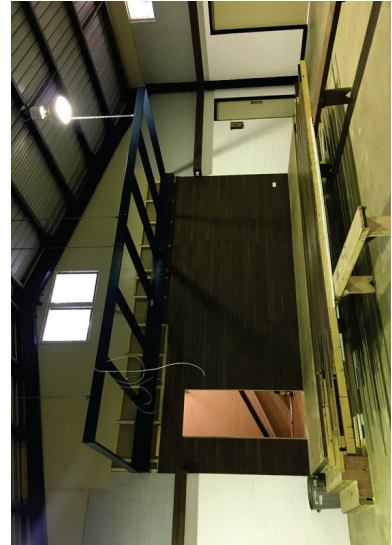


CONVERSATION CIRCLES

We have recently built 10 'Conversation Circles' at our picturesque Base Camp. With all groups arriving, traversing through and departing from Base Camp, it makes for a bustling hub on most days. The Conversation Circles ensure a quiet space for each group, as well as an immediate sense of identity and belonging as they move through Base Camp - be it the beginning, end or midway through their journey at Somerset.

The Conversation Circles will be used for group meetings, gear allocation and repacking, debriefs, picnic lunches and snacks. Each Circle has been named after a town in the local Hawkesbury region and contains information on the history as well as the most common flora and fauna species in the suburb. After your next visit, you'll be able to quiz your students on the towns of Colo, Freeman's Reach, Glossodia, Lower Portland, Windsor, Ebenezer, Sackville, Richmond, Wilberforce, and Pitt Town!



SHERWOOD DINING HALL REFRESH

The walls of our Sherwood Dining Hall had seen one too many meals over recent times, so during first term it has had a thorough refurbishment which included:

- 1 An external and internal paint job involving hundreds of litres of paint
- 2 Polished concrete floors
- 3 A new stage with lighting and sound
- 4 Innovative multimedia screen

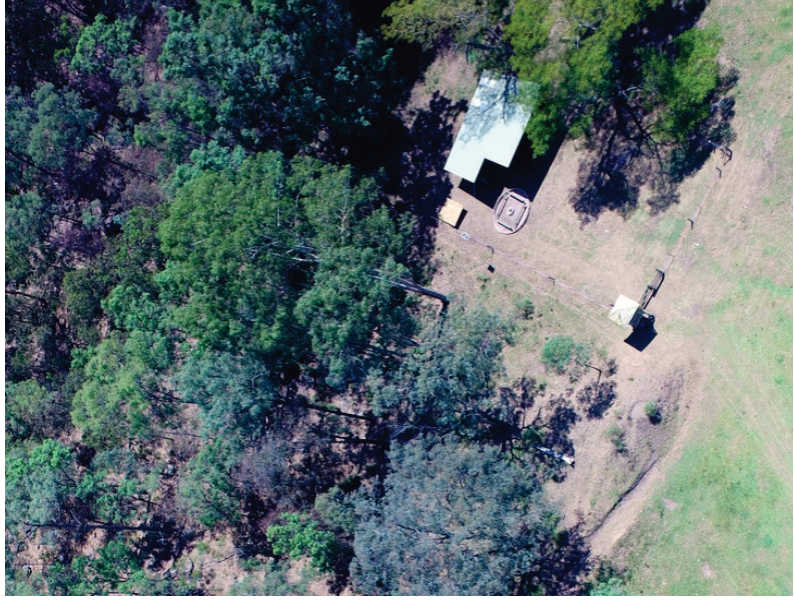


This will now be a fresh space for those groups utilising it for breakfast, lunch or dinner, as well as night time and wet weather activities.

OUR NEW ACTIVITY EQUIPMENT STORAGE



With our ever expanding gear requirements, a new purpose built storage area has been designated. From arrows to helmets, ropes and camouflage cream; everything has its' place. All of our gear is checked, maintained and replaced on a regular basis.



BASE 7 + HQ

Our popular Base 7 camouflage activity required a command post, so the Headquarters (HQ) Campsite was constructed. Complete with decked floor, fixed roof, stainless-steel camp kitchen, watch-tower and camo markings - HQ is our latest campsite. At HQ the students are briefed and costumed in camouflage gear for the activity before heading-off on a game of stealth, concealment and reconnaissance.



16 FIXED CAMPSITES

The construction of the HQ Campsite has brought our fixed campsite total to 16! All these campsites are located on private land and are used exclusively by Somerset. Our sites all have the following features:

- Resplendent with a LED-lit shelter and benches throughout
- Drinking water on tap
- Campfire circle and firewood
- Flushing toilets with hand-washing sinks
- Grassy area for tent set-up & teacher's-tent platform
- Accessible by road.

